



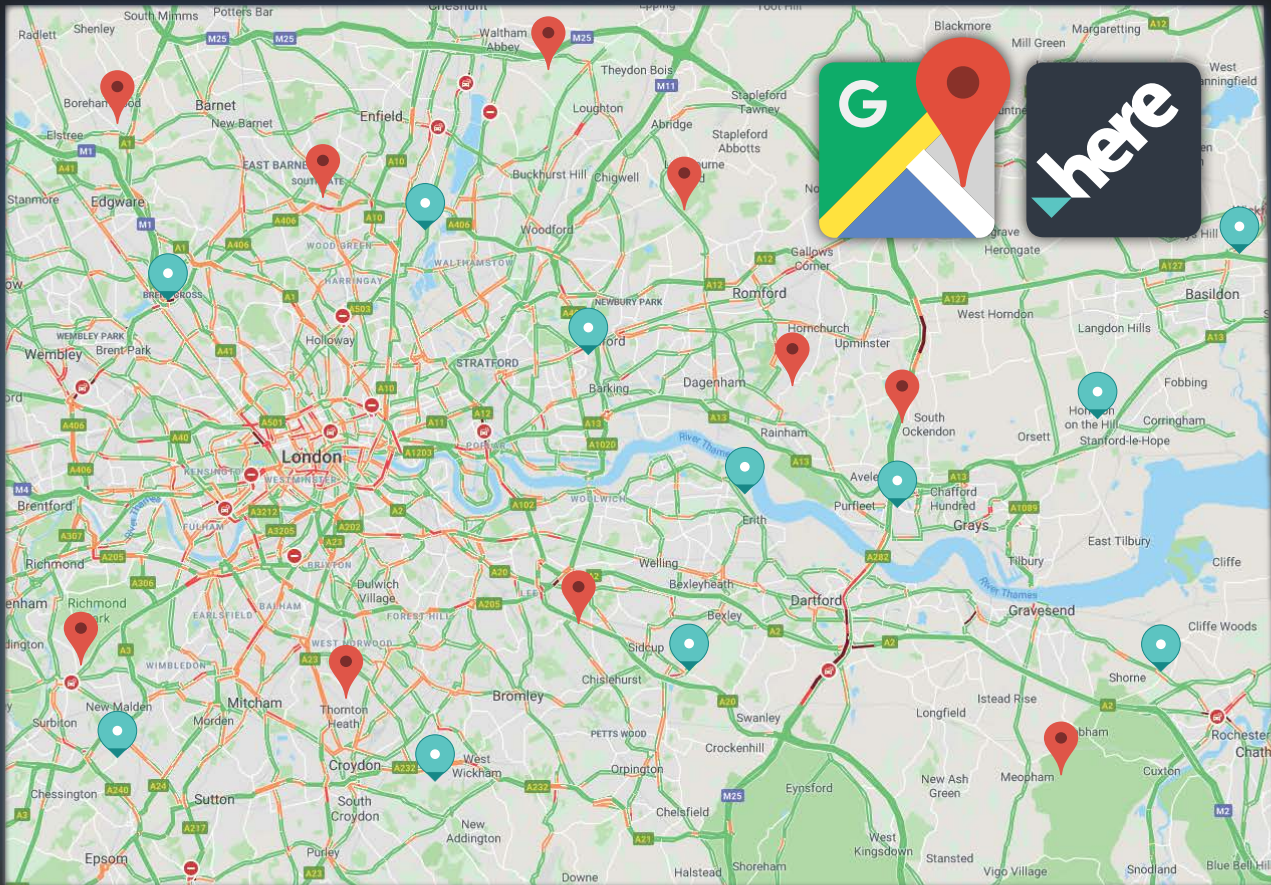
Mapping Solutions

The global mapping and geo-location solution for M2M/IoT devices



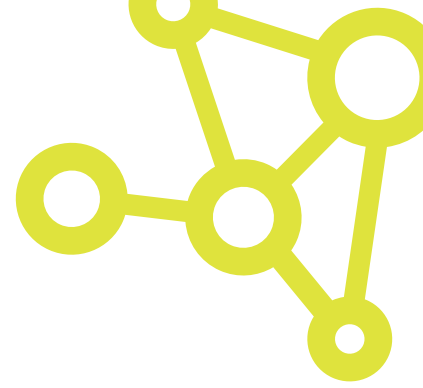
World-class mapping at your fingertips...





Business Intelligence | Fleet Telematics | Asset Tracking and Routing | Driver Behaviour | Smart Cities | IoT applications





Whether your location-based application is driving complex geospatial solutions or accurate fleet telemetry, choosing the right mapping platform is essential to delivering integrity and positional accuracy to your data outputs.

At Wireless Logic, we deliver the two world-leading mapping solution platforms in HERE and Google Maps.*

Our HERE and Google Maps partner status enables customers to access each or both platforms seamlessly, competitively and with the ability to combine the costs of mapping and cellular connectivity into one rolled-up monthly cost.

Today HERE and Google Maps platforms are employed across a growing range of uses - Business Intelligence, Fleet Telematics, Asset Tracking and Routing, Driver Behaviour, Smart Cities and IoT applications. For each application, mapping solutions are enabling organisations to make better decisions, optimise workforces and asset performance, and deliver more competitive services by knowing exactly where their business is.

Wireless Logic's strength is making access to complex mapping solutions simple, with better support, and commercially competitive – all supported by a team of specialist mapping experts.

* HERE and Google Maps rank first and second in the OVUM Location Platform Index, (08.19).



Our two **world class mapping solutions...**

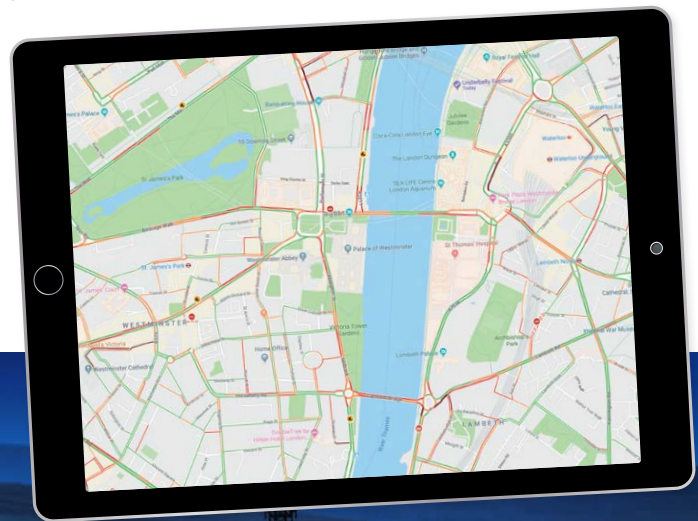


Google Maps – there's so much more

Google Maps is widely known as the most popular consumer mapping application – it's used by the world every moment of every day.

Yet Google also offers these services for business applications, delivering enterprise-levels of service and support to effectively map assets and solutions using a dedicated business API.

This enables users to use real-time mapping as part of their application and also integrate asset location without the need for GPS.



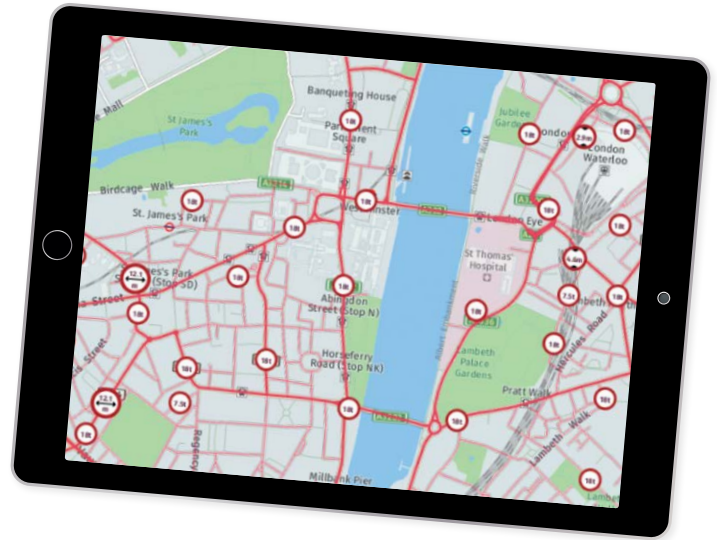


Get to know HERE

HERE is the global leader in in-car navigation maps – it is more than likely the provider of maps in your car.

Together with world-class mapping data, HERE has a market-leading feature-rich location platform designed primarily at the enterprise market. The HERE location platform delivers much more beyond the traditional mapping, satellite imagery, routing and reverse geocoding options. Examples include the option to build your own mobile (iOS/Android) navigation device for your fleet, based on HERE's mobile SDK.

The mobile SDK also powers HERE's free HERE WeGo consumer app. To learn more about the HERE WeGo consumer app, simply visit your app store or site for details.





Know where you are...

...with mapping solutions

Mapping and geo-location solutions are now used across a growing number of applications including:



Web enhancement

Creating a more informed web service for your customers – consumer-class experience in enterprise-focused settings.



Routing and navigation solutions

Point to point, optimised matrix multi-vehicle routing, truck attributes, road infrastructure data (e.g speed limits, slopes).



Mobile Asset Management

Real-time insight and tracking of your assets. Know where they are with GPS, mobile network cell-site and Wifi.



Driver behaviour

Capture position, route scenario, traffic conditions and more to analyse and record people performance and actions.



Business mapping

Visualise business-critical information in a geographical context.



Geo-coder and Reverse Geo-coder

From an address to point on a map and from GPS latitude/longitude to an address, streamline processes for immediate business decisions.



Business locator

Make it easier for customers to find your services easily supported by real-time routing information.



Geo-fencing

Alert your operators, your customers and your business when assets enter defined geo-fenced locations.





Deciding on the best mapping platform

HERE and Google Maps are ranked as the very best Location Platforms, globally.

Each has its unique features and in many cases, both platforms will deliver equally effective results for an application. In some scenarios, both platforms are used concurrently.

Our mapping solutions experts can talk through the merits of each and provide trials for testing.

Our simple guide...

Applications requiring:

Map-based market/business analysis

Tracking & routing with real-time traffic

Geo-fencing and Matrix routing

Advanced truck routing, including toll costs

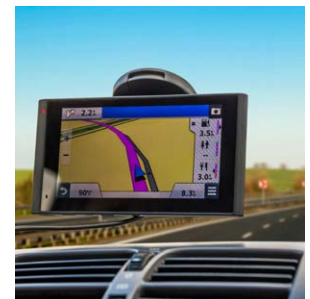
Street-level imagery

High-level aerial imagery

Driver behaviour, high-quality speed limits

Very high number of transactions per asset

Suitable platform:



Why choose **Wireless Logic** for mapping?



Access to world-class mapping technology

Traditionally, global mapping platforms have been limited by high licensing fees, usage tariffs and set-up costs.

Wireless Logic's partnerships with HERE and Google Maps provide highly effective mapping solutions with a low cost of entry.



Ease of use

Using API and mobile SDK integration tools, complex mapping solutions are simplified with seamless compatibility.

Our mapping solutions deliver unlimited data requests for uninterrupted usage.



One monthly cost

Competitive pricing is on a per user/case basis and can be combined with connectivity billing into one easy to manage monthly cost.

Capital expenditure is reduced with costs spread across contract terms on an OPEX basis.



Our specialist teams can deliver immediate answers... We're making the HERE and Google Maps platforms more accessible and competitive.



Sector-leading customer support

Our team includes specialists who have worked directly for the mapping platforms – they know the technology and how to apply it effectively to applications - configuration, day-to-day support and all-round know-how.



Single point of contact

Manage your mapping and connectivity through one provider. Our specialist teams can deliver immediate answers, cutting through the typical red tape of dealing with major corporate giants.



Future proofing your mapping-based application

Our mapping experts can keep you abreast of market and technology changes to keep you ahead in the mapping solutions arena.

You'll be first to hear of changes and updates – all designed to enhance your application's location-based performance.

Explore new possibilities

Our mapping team is looking forward to working with you and offer advice on the best mapping solution for your needs.

For recommendations, demonstrations, and trials, talk to our specialists today.

0330 056 3300



FS 630147

UK

Wireless Logic Group Ltd

Horizon
Honey Lane
Hurley
Berkshire
SL6 6RJ, UK
0330 056 3300

Denmark

Wireless Logic Nordic

Valdemarkshaab 11
DK 4600 Køge
Denmark
70 22 20 45

France

Wireless Logic France

Parc de la Duranne
255, Avenue Galilée
13857 Aix-en-Provence
Cedex 3
France
04 42 16 60 17

Matooma

Le Liner
ZAC de l'Aéroport
Montpellier Méditerranée
Entrée 2 SIS -
2630 Avenue Georges Frêche
34470 Pérols
France
04 88 36 07 40

Germany

Wireless Logic GmbH

Technopark
Am Hochacker 4
85630 Grasbrunn
Germany
089 55 06 21 39

mdex GmbH

Bäckerberg 6
22889 Tangstedt
Germany
041 09 55 54 44

Netherlands

M2MBlue BV

Josink Maatweg 43
7545 PS Enschede
The Netherlands
085 0 160 666

SIMPoint

Esp 237
5633 AD, Eindhoven
The Netherlands
040 8 489 489

Spain

Wireless Logic SL

C/ Jose Luis Goyoaga 32
Edificio Noray, Oficina 103
48950 Erandio (Bizkaia)
Spain
34 944 043 962

